



DON'T FORGET
These instructions can be found in
color and expandable at QA1.net

Technical Support Line: (952) 985-5675 Email: sales@QA1.net

INSTALLATION INSTRUCTIONS

QA1 P/N RDK52623, RDK52624, RK112K
'07-'18 Silverado Rear Shackle Kit (2" to 3" drop)

TOOLS AND SUPPLIES REQUIRED

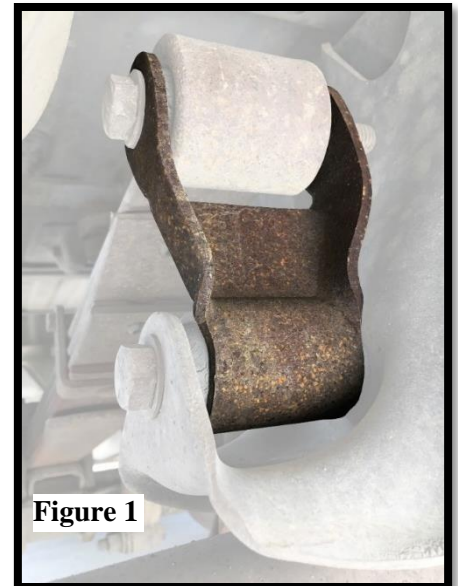
- Floor Jack
- Two (2) Jack Stands
- SAE and Metric Wrench Set
- Ratchet & Socket Set
- Torque Wrench
- Anti-seize

PRE INSTALLATION NOTES:

Confirm that all the hardware listed on page 3 is present before beginning the installation.

DISASSEMBLY-

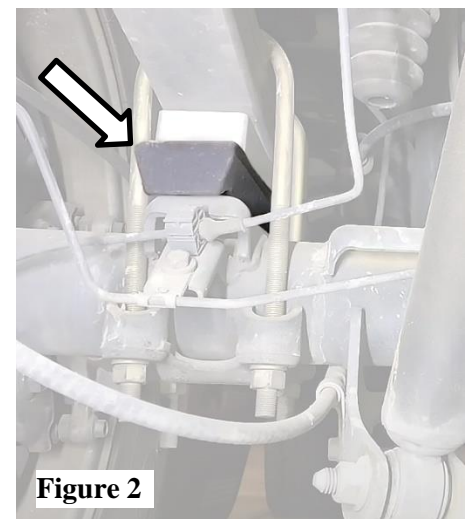
- 1) Chock the front tires with the truck in gear (manual transmission) or park (automatic transmission).
- 2) Raise and support the rear of the vehicle and support using jack stands at the manufacturers specified locations. NEVER work on or go underneath a vehicle supported only by a jack.
- 3) Support the rear axle using a jack to take pressure off the leaf springs. Do not apply enough force to raise the truck.
- 4) Remove the rear leaf spring to shackle mounting bolt from one side of the truck at a time. Do not remove both left and right leaf spring bolts at the same time. **(Figure 1)**
- 5) Remove the shackle to frame bracket mounting bolt and remove the shackle from the truck.



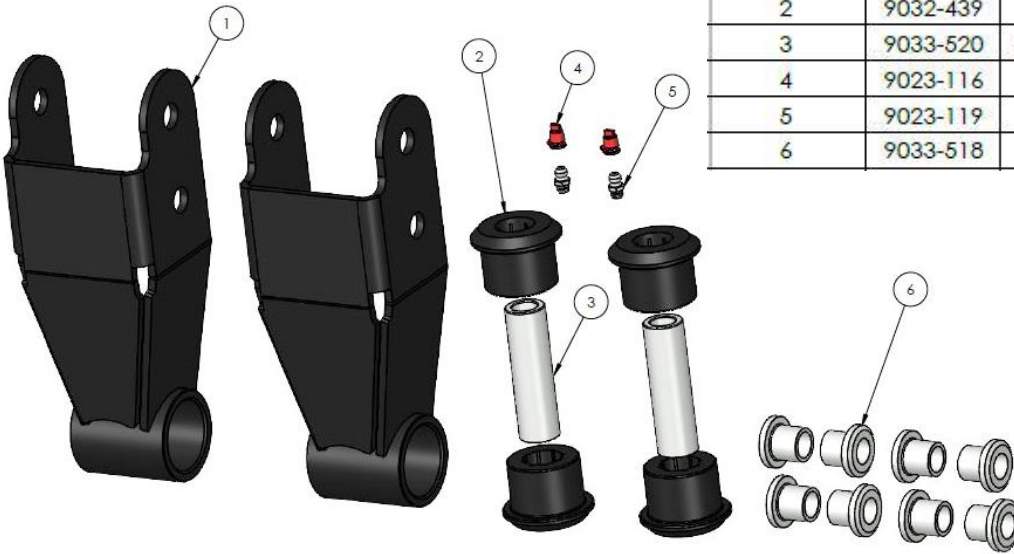
2" or 3" Drop-

The installation of just the shackles with the spring mounted to the upper hole will result in 2" of drop. For 3" of drop, the factory block will also need to be removed. The shackle is installed the same for both 2" and 3" drop, with the removal of the factory block being the only difference.

If 3" of drop is desired, remove the factory block **(Figure 2)** by removing the u-bolts while the axle is supported. If removing the factory block, re-install the u-bolts with the included thick fender washers under the u-bolt nuts. **Failure to install the thick fender washers under the nuts will result in the nuts running out of thread before the u-bolts are tight.** Torque to 74 lb. ft.



BALLOON #	ITEM #	DESCRIPTION	QTY.
1	9637-687	WELDMENT, SPRING SHACKLE	2
2	9032-439	BUSHING, POLY 2-PIECE, BLACK	4
3	9033-520	SLEEVE, .875" OD X .563" ID X 3.00" L	2
4	9023-116	CAP, GREASE ZERK	2
5	9023-119	FITTING, ZERK 1/4-28, STRAIGHT	2
6	9033-518	SPACER, 14MM ID X .75" OD X .86"	8



ASSEMBLY AND INSTALLATION-

- 1) Push one bushing half (#2) into each end of the QA1 spring shackle (#1).
- 2) Lightly grease the metal sleeve using marine grease (#3) before inserting it through the bushings.
- 3) Thread the included grease fitting (#5) into the end of the bushing can with a 7mm socket. Tighten to 37 lb. in.
- 4) Use 1-2 pumps of marine grease before installing the red grease cap (#4). Do not over grease this part as it will bulge the bushing halves out of the assembly.
- 5) Install the shackle to the factory leaf hanger with the bushing end down and the closed portion of the shackle towards the rear. (Figure 3 & 4) Secure using the supplied 14mm bolt, two washers and nyloc nut per connection. Torque to 70 lb. ft.
- 6) Install the eyelet of the spring into the top shackle hole and secure with the supplied 14mm bolts, two washers and nyloc nut per side. Torque to 70 lb. ft. (The lower spring mount hole in the QA1 shackle is only used with additional parts in the QA1 4"-6" drop kit)

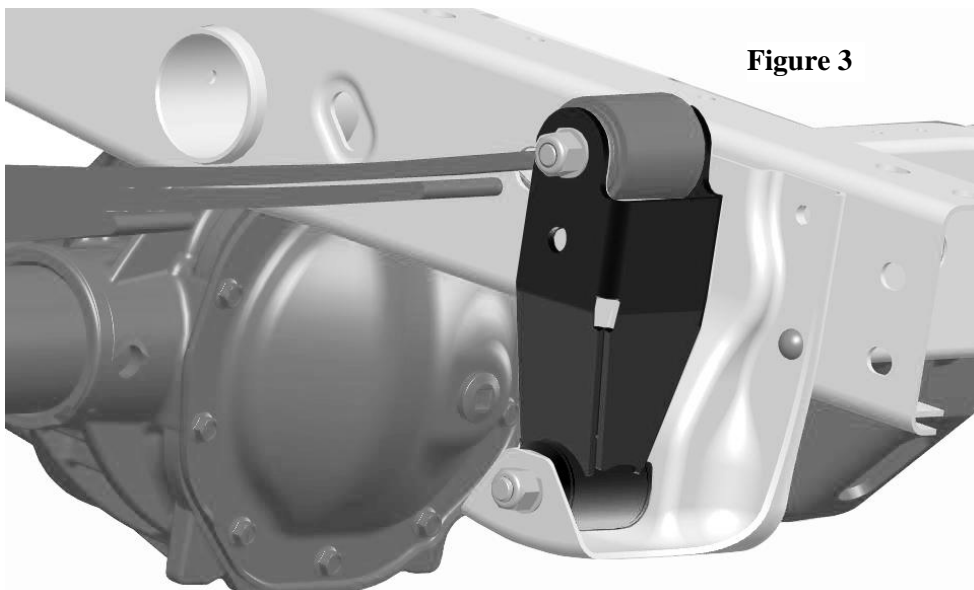


Figure 3

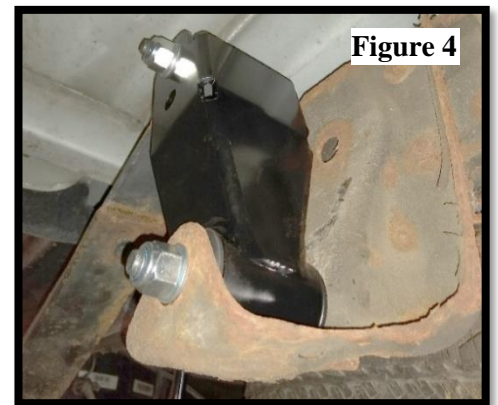
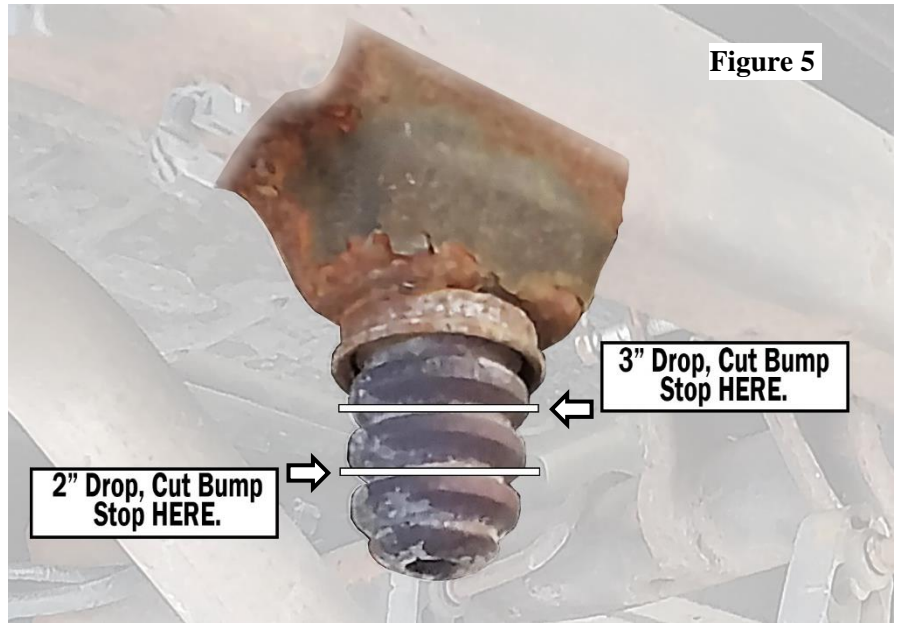


Figure 4

Figure 5



- 7) Trim the factory bump stop to the length matching the amount of drop. (Figure 5)

Hardware List

DESCRIPTION	QTY/KIT
HEX HEAD BOLT, M14-2.0 X 110MM, CLASS 10.9 ZINC	4
NYLOCK NUT, M14-2.0, 16MM HT, CLASS 10, ZINC	4
WASHER, M14, 28MM OD, ZINC	8
OVERSIZED WASHER, M14, 15MM ID, 36MM OD, 5.4-6.6 MM THICK. ZINC	8

SHOCK INSTALLATION-

- 1) Install one spacer (#6) into each side of the shock bushings. (Figure 6) Each shock will use a total of four spacers.
- 2) Install the shocks into the factory shock mounts re-using the factory hardware. The adjustment knobs should be towards the bottom, facing the rear of the truck. Torque to 85 lb. ft.

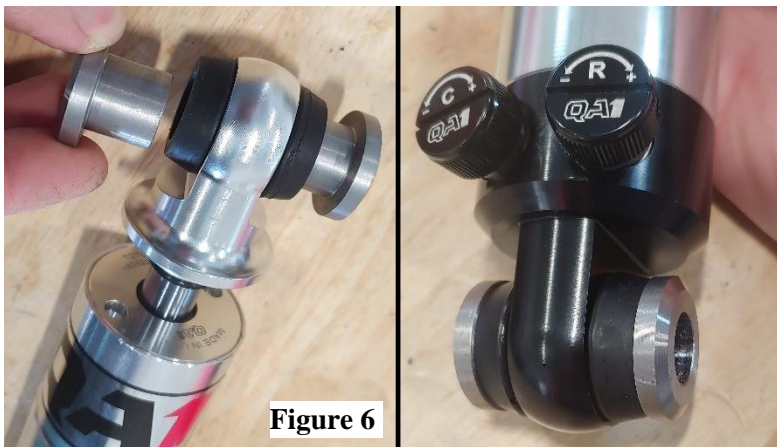


Figure 6



Rear Shock Valving Adjustments

Shocks with one adjuster knob:

Shocks with two adjuster knobs:

Compression

Rebound

Drag Racing:	4-10 clicks	7-12 clicks	2-8 clicks
Nice ride and handling:	0-6 clicks	0-6 clicks	2-8 clicks
Firm ride & improved handling:	6-12 clicks	6-12 clicks	8-14 clicks
Aggressive handling:	13-18 clicks	13+ clicks	14-18 clicks

Important Notice Regarding ADAS: This product may affect the operation of your vehicle's ADAS, such as lane departure warning systems, automatic emergency braking systems, and adaptive cruise control systems. It is the responsibility of the installer to ensure that the ADAS systems are properly recalibrated after installation. Failure to do so may result in the ADAS systems not operating as intended and could potentially lead to a collision or other safety hazards. By purchasing and installing this product, you acknowledge and accept the risks associated with modifying your vehicle's suspension and potentially affecting its ADAS systems.



Technical Support Line: (952) 985-5675 Email: sales@QA1.net

READ ALL INSTRUCTIONS CAREFULLY AND THOROUGHLY PRIOR TO STARTING INSTALLATION. PRODUCTS THAT HAVE BEEN INSTALLED ARE NOT ELIGIBLE FOR RETURN. USE THE PROPER JACKING LOCATIONS. DEATH OR SERIOUS INJURY CAN RESULT IF INSTRUCTIONS ARE NOT CORRECTLY FOLLOWED. A GOOD CHASSIS MANUAL, AVAILABLE AT YOUR LOCAL PARTS STORE, MAY ALSO AID IN YOUR INSTALLATION.

• DISCLAIMER / WARRANTY •

QA1 WARRANTS THAT THE PRODUCTS WILL BE FREE FROM DEFECTS IN MATERIAL AND WORKMANSHIP FOR ONE YEAR FROM DATE OF SALE TO THE ORIGINAL PURCHASER. QA1 MAKES NO OTHER WARRANTY OF ANY KIND, EXPRESS OR IMPLIED. QA1 SHALL HAVE NO OBLIGATION UNDER THE FOREGOING WARRANTY WHERE THE DEFECT IS THE RESULT OF IMPROPER OR ABNORMAL USE, YOUR NEGLIGENCE, VEHICLE ACCIDENT, IMPROPER OR INCORRECT INSTALLATION OR MAINTENANCE, NOR WHEN THE PRODUCT HAS BEEN REPAIRED OR ALTERED IN ANY WAY. QA1'S LIABILITY IN THE CASE OF DEFECTIVE PRODUCTS SUBJECT TO THE FOREGOING WARRANTY SHALL BE LIMITED TO THE REPAIR OR REPLACEMENT, AT QA1'S OPTION, OF THE DEFECTIVE PRODUCTS. THE USER UNDERSTANDS AND RECONGNIZES THAT RACING PARTS, SPECIALIZED STREET ROD EQUIPMENT, AND ALL PARTS AND SERVICES SOLD BY QA1 ARE EXPOSED TO MANY VARIED CONDITIONS DUE TO THE MANNER IN WHICH THEY ARE INSTALLED AND USED. QA1 SHALL BEAR NO LIABILITY FOR ANY LOSS, DAMAGE, OR INJURY, EITHER TO A PERSON OR TO PROPERTY, RESULTING FROM THE INSTALLATION, DIRECT OR INDIRECT USE OF ANY QA1 PRODUCTS OR INABILITY BY THE BUYER TO DETERMINE PROPER USE OR APPLICATION OF QA1 PRODUCTS. WITH THE EXCEPTION OF THE LIMITED LIABILITY WARRANTY SET FORTH ABOVE, QA1 SHALL NOT BE LIABLE FOR ANY CLAIMS, DEMANDS, INJURIES, DAMAGES, ACTIONS, OR CAUSES OF ACTION WHATSOEVER TO BUYER ARISING OUT OF OR CONNECTED WITH THE USE OF ANY QA1 PRODUCTS. MOTORSPORTS ARE DANGEROUS, AS SUCH, NO WARRANTY OR REPRESENTATION IS MADE AS TO THE PRODUCTS ABILITY TO PROTECT THE USER FROM INJURY OR DEATH. THE USER ASSUMES THAT RISK!

DEDICATED TECH SUPPORT

QA1 is dedicated to providing quality support and instructions. We employ passionate racers and car enthusiasts that know our products and the industry to better serve you.

CHECK US OUT ON YOUTUBE!



- Frequently Asked Questions
- Quick Tips
- Install Information
- Tuning and Repair Guides
- Other Technical Infomrtation



[linkedin.com/company/qa1](https://www.linkedin.com/company/qa1)

[instagram.com/qa1motorsports](https://www.instagram.com/qa1motorsports)

[facebook.com/qa1motorsports](https://www.facebook.com/qa1motorsports)

[youtube.com/qa1tech](https://www.youtube.com/qa1tech)

www.qa1.net/tech